



Sign Tower

STE060 series

LED

85 db at 1 m

IP65 (Buzzer IP54)

Ø70

Modular Type



Modular construction



LED Sign Tower **STE060** series

- ✓ IP65 protected structure (Buzzer IP54)
- ✓ Long-life product due to high brightness of LED light
- ✓ Simple structure from 1 stack to 5 stacks
- ✓ Various mounting supporters
- ✓ Easy to change the colors due to module type



Suffix code

Model	Code	Description
STE060 –	<input type="checkbox"/> <input type="checkbox"/> <input type="checkbox"/>	Ø60 LED Light sign tower
Function	A	Lighting only
	F	Lighting, Flickering, Buzzer (External signal)
Power supply voltage	D51	24 V d.c.
	A11	100 – 240 V a.c. 50– 60 Hz
Stacking modules	1	1 stack (Red)
	2	2 stacks (Red, Yellow)
	3	3 stacks (Red, Yellow, Green)
	4	4 stacks (Red, Yellow, Green, Blue)
	5	5 stacks (Red, Yellow, Green, Blue, White)
Supporter selection	L	L type supporter (Standard type)
	E	Elbow type supporter (EPM-18)
	M	Plastic supporter (MP-60)
	S	Plastic supporter (ST-011)

※ The color was arranged from top to bottom in following order, Red, Yellow, Green, Blue, and White.
There are two types of functions which are lightening only / Lightening, Flickering & Buzzer.


Base unit suffix code

Model	Code	Description
STE060 –	<input type="checkbox"/> <input type="checkbox"/> <input type="checkbox"/>	STE060 Sign tower base unit
Classification	B	Base unit
	A	Lighting only
Function	F	Lighting, Flickering, Buzzer (External signal)
	B	Lighting only
Power supply voltage	D51	24 V d.c.
	A11	100 – 240 V a.c. (50– 60 Hz)

LED unit suffix code

Model	Code	Description
STE060 –	<input type="checkbox"/> <input type="checkbox"/>	STE060 Sign tower LED unit
Classification	L	LED unit
Power supply voltage	R	Red unit
	Y	Yellow unit
	G	Green unit
	B	Blue unit
	W	White unit

Base unit specification

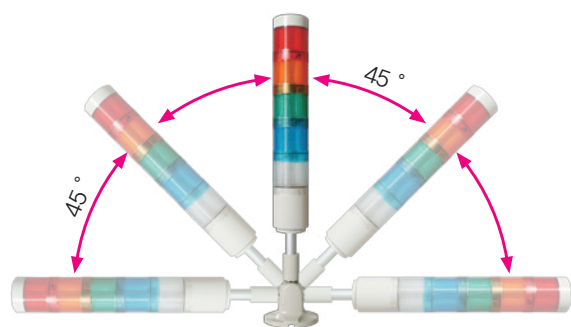
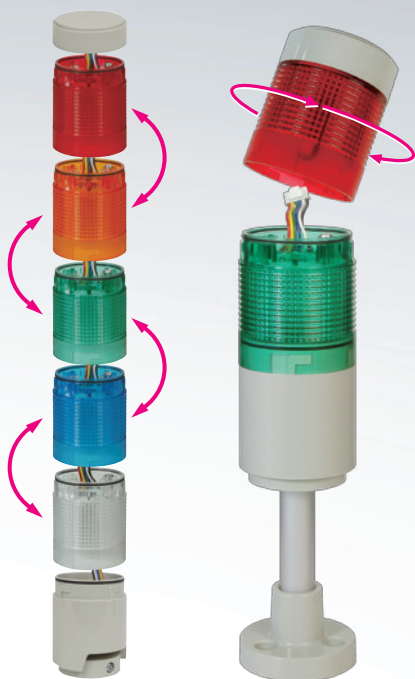
Model	STE060–BAD51	STE060–BFD51	STE060–BAA11	STE060–BFA11	Dimension
Power supply voltage	24 V d.c.		100 – 240 V a.c. 50 – 60 Hz		 DC type AC type
Function	Lighting only	Lighting, Flickering, Buzzer (External signal)	Lighting only	Lighting, Flickering, Buzzer (External signal)	
Flickering time	–	60 times / minute	–	60 times / minute	
Buzzer sound types	–	A single melody / beeping	–	A single melody / beeping	
Size of buzzer sound	–	85 dB (1 m distance)	–	85 dB (1 m distance)	
Consumption of electrical power	–	1.2 W	–	1.2 W	
Ambient Temperature/Humidity	–5 °C ~ 50 °C / 35 ~ 85 % RH (with no condensation)				
Weight	76 g	96 g	160 g	178 g	

LED unit specification

Model	STE060–LR	STE060–LY	STE060–LG	STE060–LB	STE060–LW
Dimension					
Power supply voltage	24 V d.c.				
Consumption of electrical power	1.2 W				
Light source	LED				
Emission angle	360 °				
Ambient Temperature/Humidity	–5 °C ~ 50 °C / 35 ~ 85 % RH (with no condensation)				
Weight (g)	43 g				

Simple LED unit separation

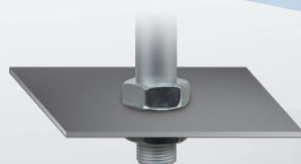
It is available to rearrange the LED units after separating them and colors of wires and unit can be matched up although the unit's position is changed.



Application of Elbow support

Installation method (supporter)

Selection of various mounting supporters



Example of installation

◀ User's Panel

Product composition

Available to change the colors easily with an application of LED light for units and module types



WORLD LEADER IN CONTROL & MEASUREMENT

Dimension

[Unit : mm]

Plastic supporter (MP-60)		Elbow type supporter (EPM-18)	L type supporter	Plastic supporter (ST-011)
AC Type	DC Type			

Connection diagram

	Contact drive		NPN transistor drive		PNP transistor drive
	Power supply 24 V d.c.	Power supply 100 – 240 V a.c.	Power supply 24 V d.c.	Power supply 100 – 240 V a.c.	Power supply 24 V d.c.
Lighting Only					
Lighting, Flickering, Buzzer					